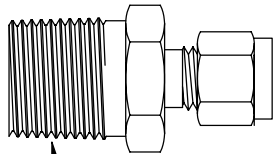
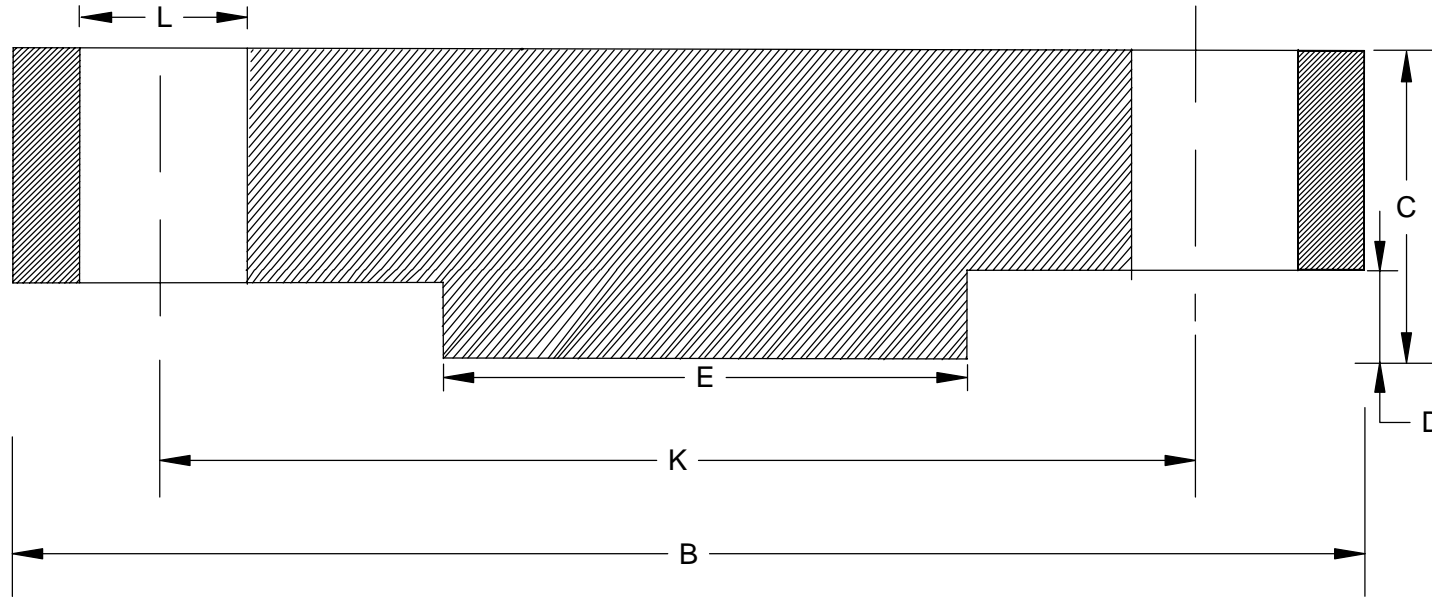
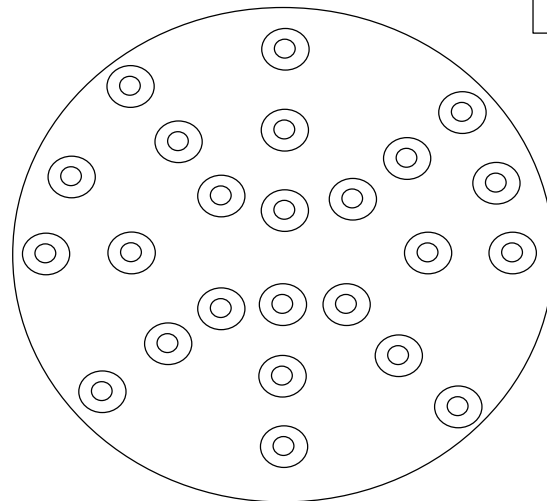


200mm x 150 lb ANSI RF 316 Stainless Steel Flange



Pipe Size	A	B	C	D	E	F	G
200	219.1	343	29.0	1.6	269.9	246	219.0



FLANGE WILL BE DRILLED & TAPPED 1/8" BSP
POSITIONS TO BE CONFIRMED

TEMPERATURE CONTROLS PTY LTD

Certificate No: QEC 14412
AS/NZS 9001:2000

CONDITIONS

THIS DRAWING IS OUR EXCLUSIVE PROPERTY AND MUST NOT BE COPIED OR HANDED TO ANY OTHER PARTIES WITH OUT WRITTEN PERMISSION. IT SHALL BE RETURNED UPON REQUEST

SYDNEY : 7 YAMMA ST SEFTON , NSW 2162
PHONE : (02) 9721 8644 FAX : (02) 9738 9339
MELBOURNE : 8/280 Whitehall St
YARRAVILLE VIC 3013
PHONE : (03) 9687 0000 FAX : (03) 9697 1900
EMAIL : sales@temperature.com.au



TITLE

SIZE : A4	DATE : 17/07/07	DWG NO : SD 610
SCALE : NTS	DRAWING BY K.F	REV : 00